

Single Junction Drop-In Isolator
3.4 GHz—3.6 GHz

MAFR-000171-5S3S1T

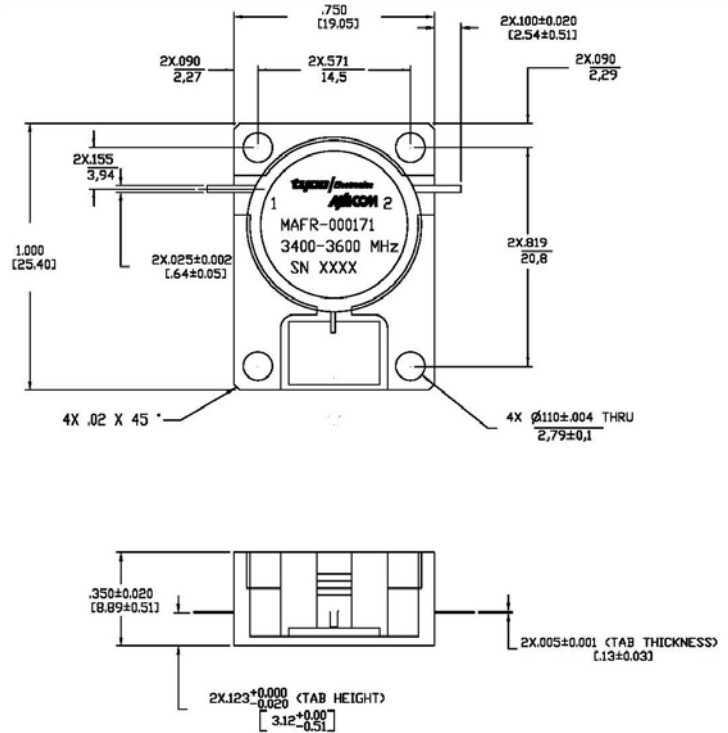
V1

Features

- Designed for WiMax market
- 25dB Isolation typical
- 0.20dB Insertion Loss typical
- Low cost package
- RoHS compliant
- Flat pack packaging

Description

This isolator is designed specifically for WiMax applications and features high reliability performance at a low cost. It is in a low cost package ideally suited for high volume manufacturing. M/A Com is one of the largest suppliers of isolator and circulators in the world.



Electrical Specifications

$T = T_{op}^1, Z_0 = 50 \text{ Ohms}$

Parameter	Test Conditions	Units	Min	Typ @25°C	Max
Frequency Range		GHz	3.4		3.6
Insertion Loss	3.4 GHz—3.6 GHz	dB		0.20	0.25
Isolation	3.4 GHz—3.6 GHz	dB	20.0	25.0	
Return Loss (Port 1 & 2)	3.4 GHz—3.6 GHz	dB	20.0	25.0	
Intermodulation	3.4 GHz—3.6 GHz	dBc	60.0	65.0	
Circulation			Clockwise		

1. See "Absolute Maximum Ratings" for T_{op} .

Absolute Maximum Ratings

Parameter	Absolute Maximum
Forward Power, CW	200 Watts
Peak Forward Power	1000 Watts
Reverse Power, CW	60 Watts max for 2 minutes max
Operating Temperature	-40°C to +85°C
Storage Temperature	-40°C to +100°C